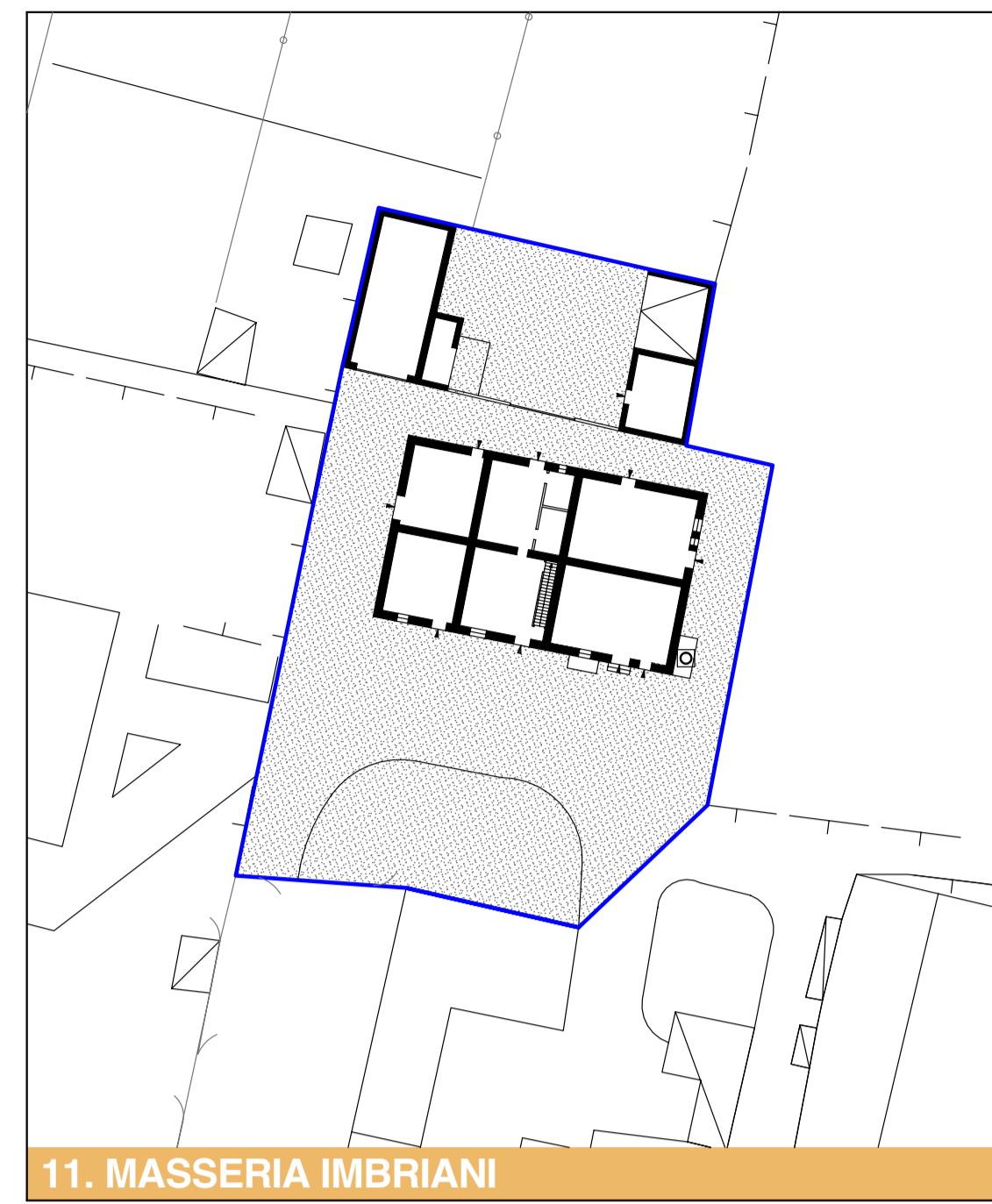
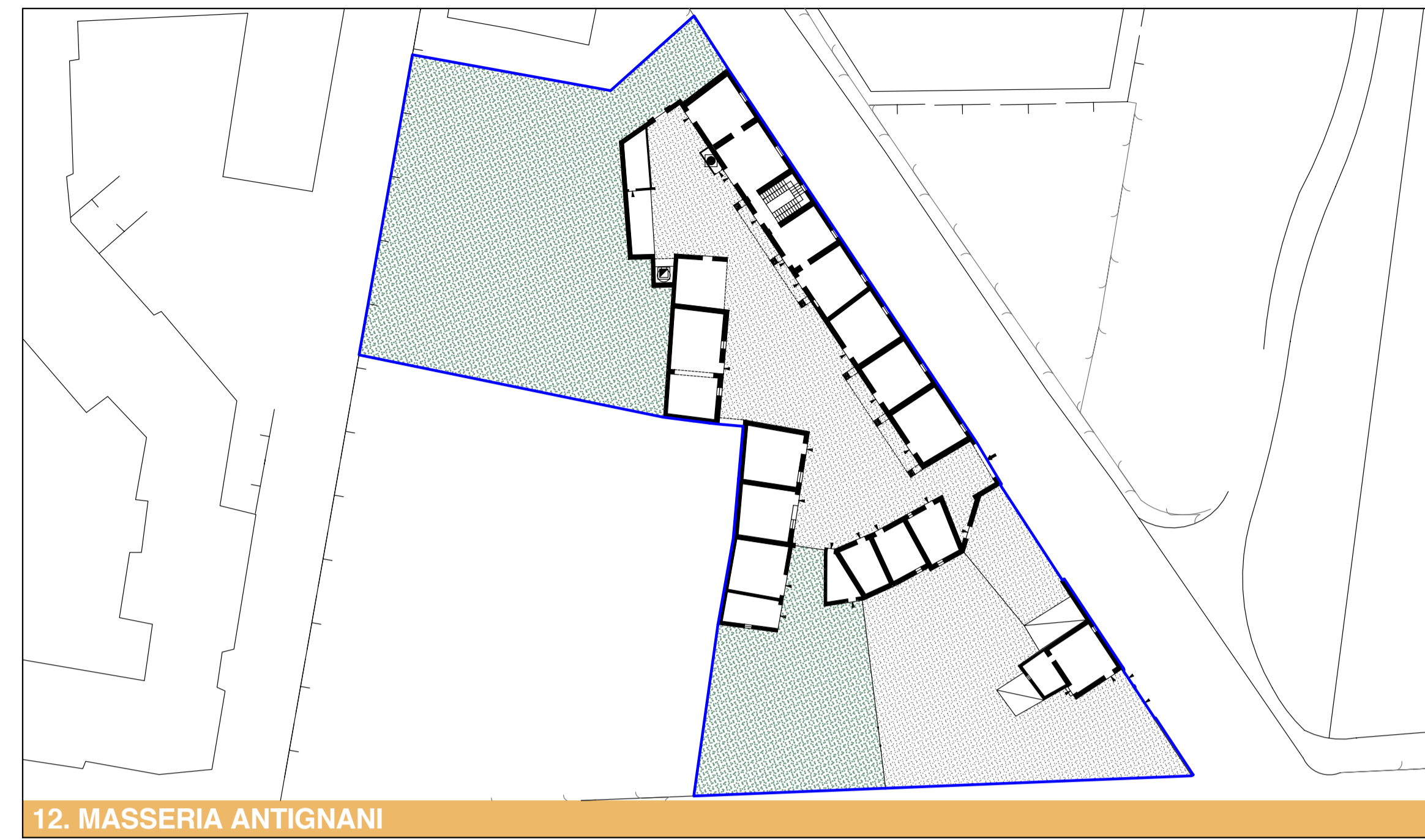


LEGENDA

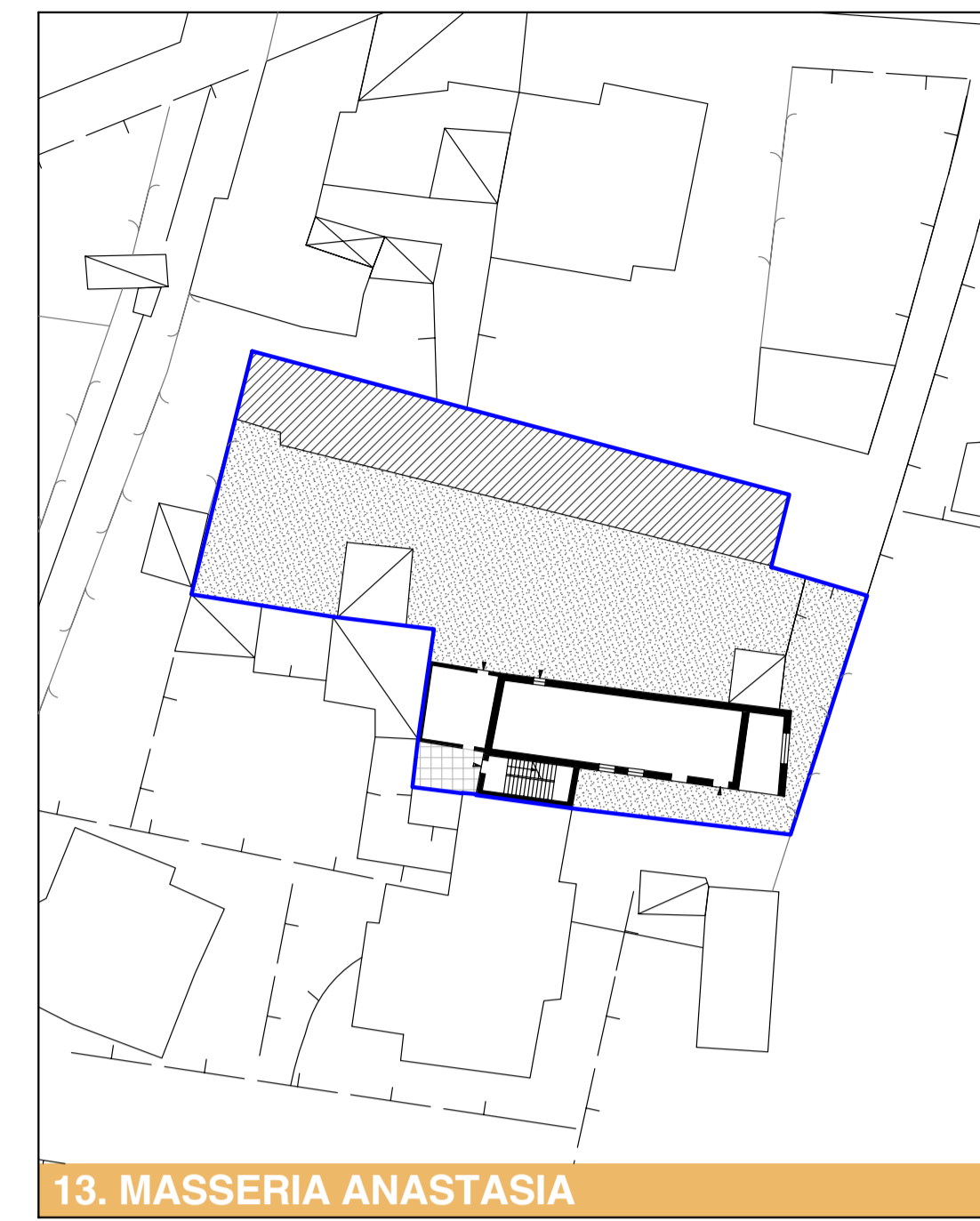
- Perimetro P.U.A.
- ▨ Corte lastricata
- ▩ Corte in terra battuta
- ▧ Pertinenza
- ▦ Giardino paradiso
- ▥ Orto domestico
- ▤ Strada lastricata
- ▣ Strada asfaltata
- ▢ Edificio non rilevato
- ⊞ Androne
- ⊟ Tettoia
- ⊠ Baracca
- ⊡ Forno
- ⊙ Pozzo
- ⊠ Lavatoio
- WC



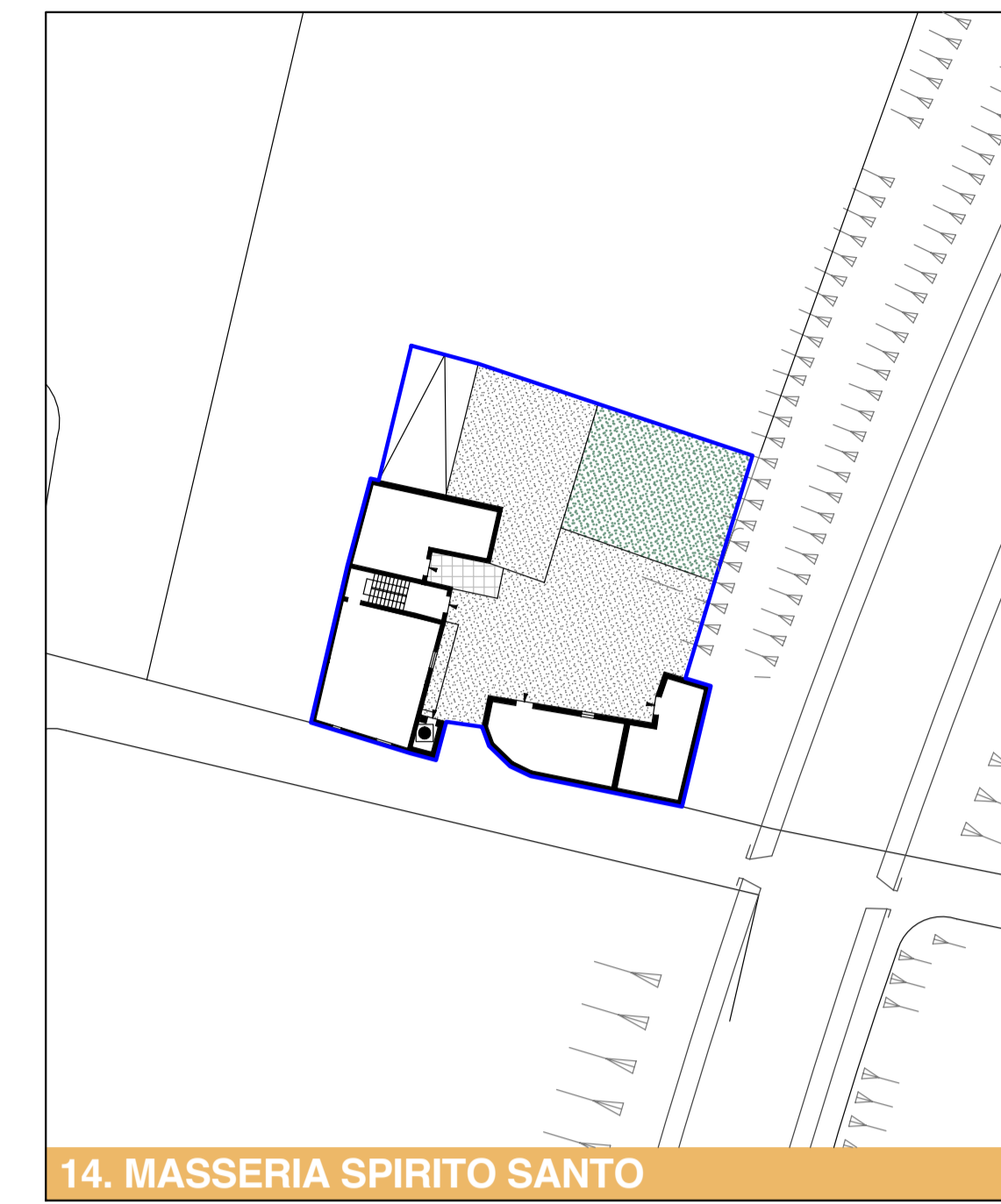
11. MASSERIA IMBRIANI



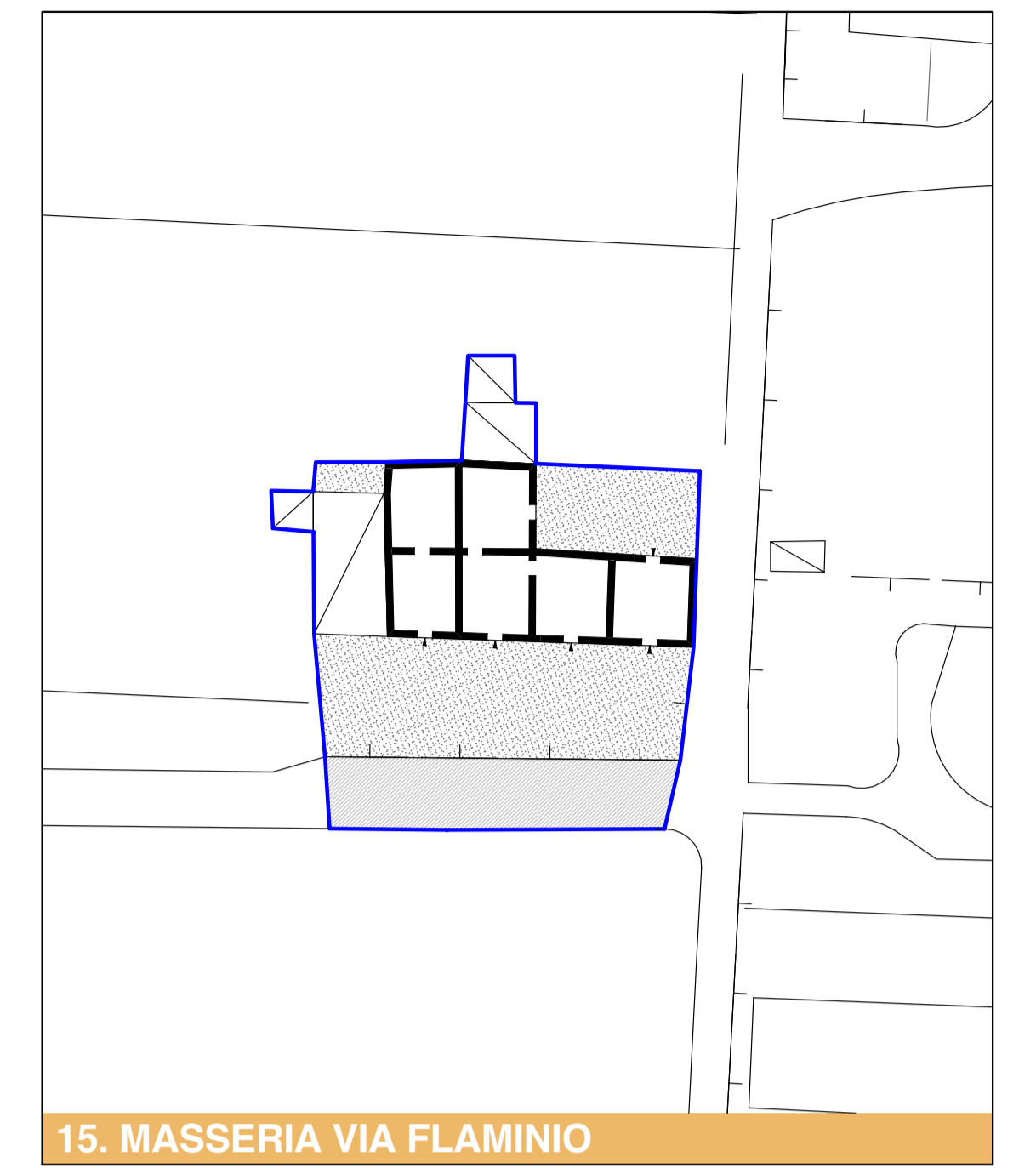
12. MASSERIA ANTIGNANI



13. MASSERIA ANASTASIA



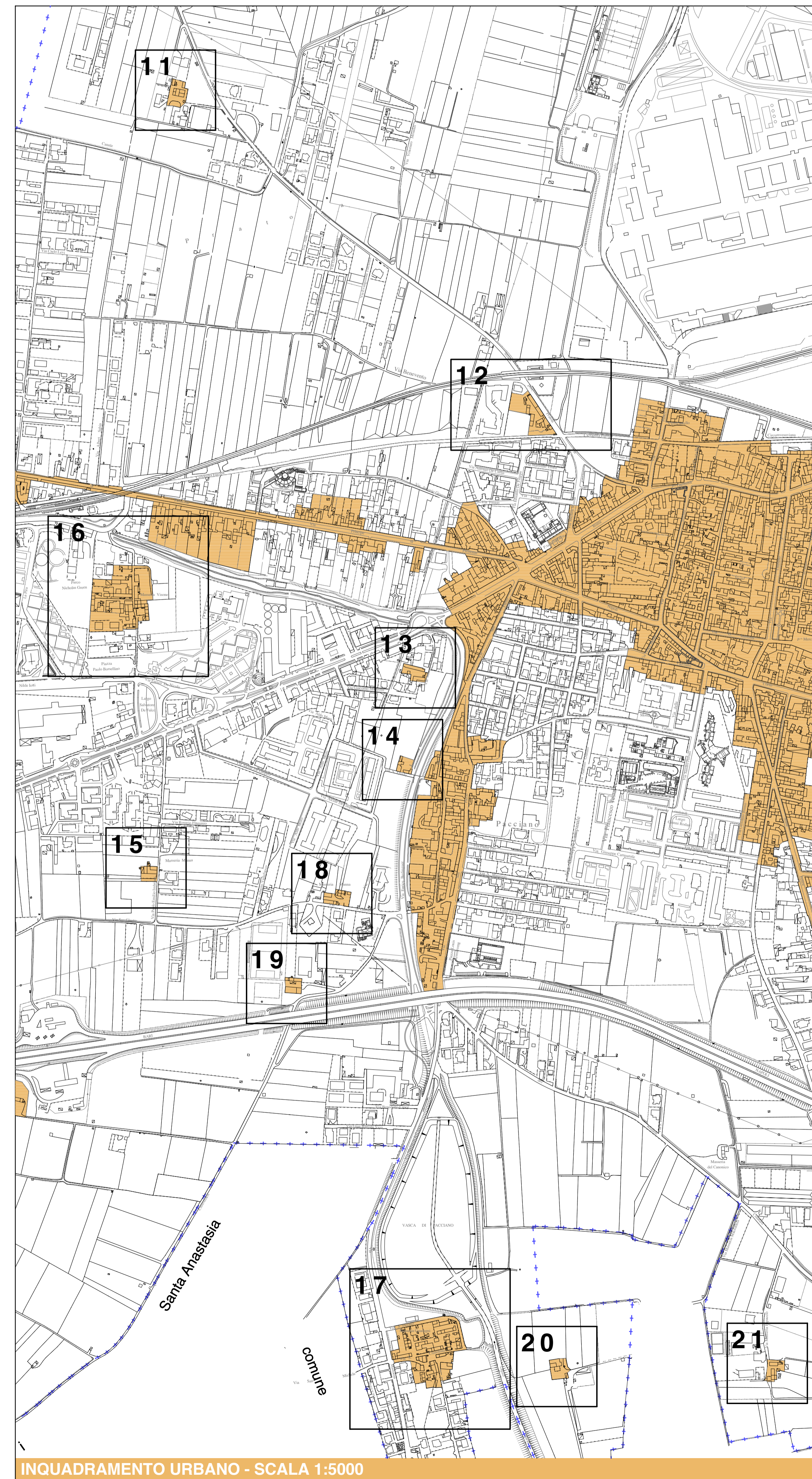
14. MASSERIA SPIRITO SANTO



15. MASSERIA VIA FLAMINIO



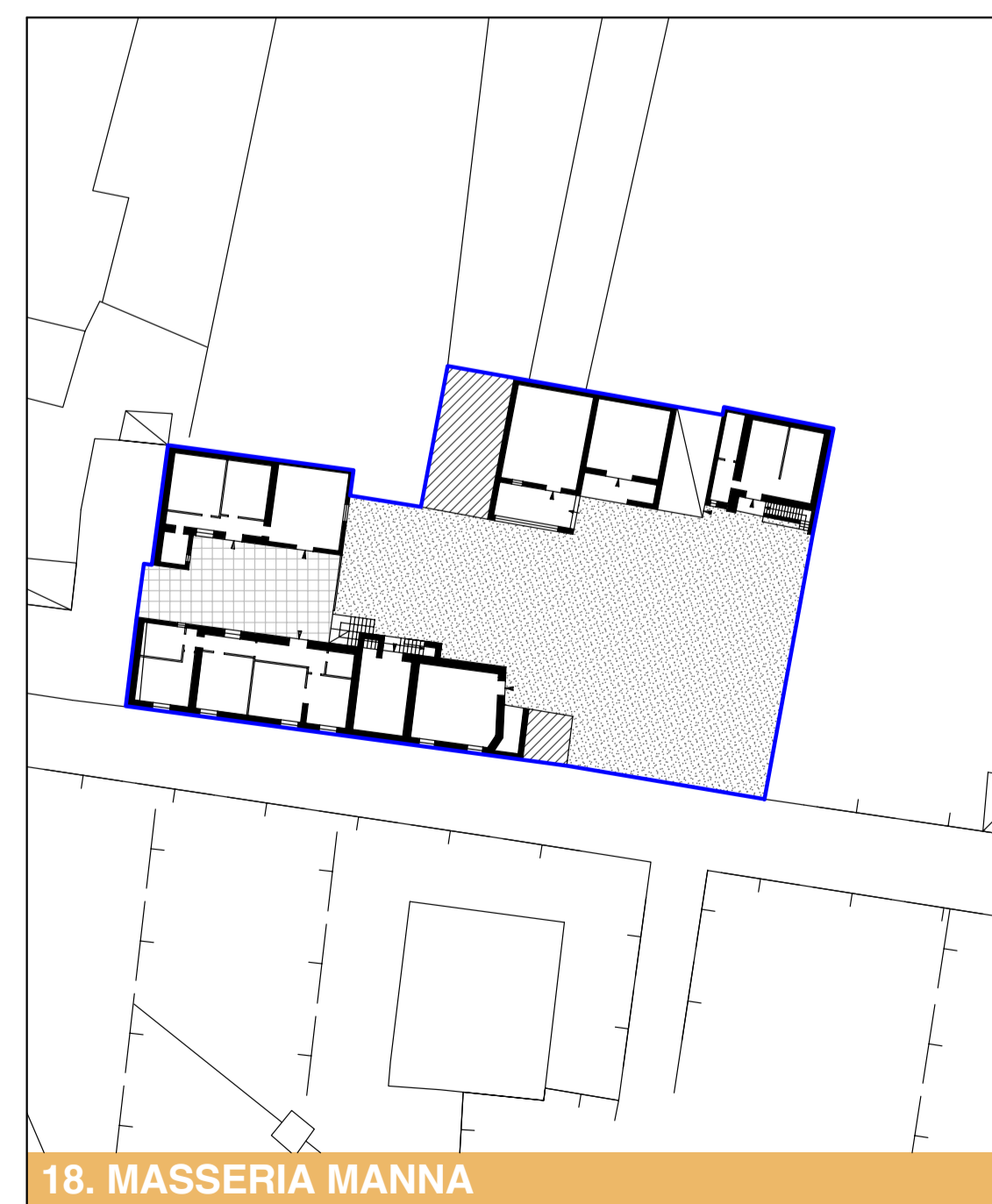
16. MASSERIA VISONE



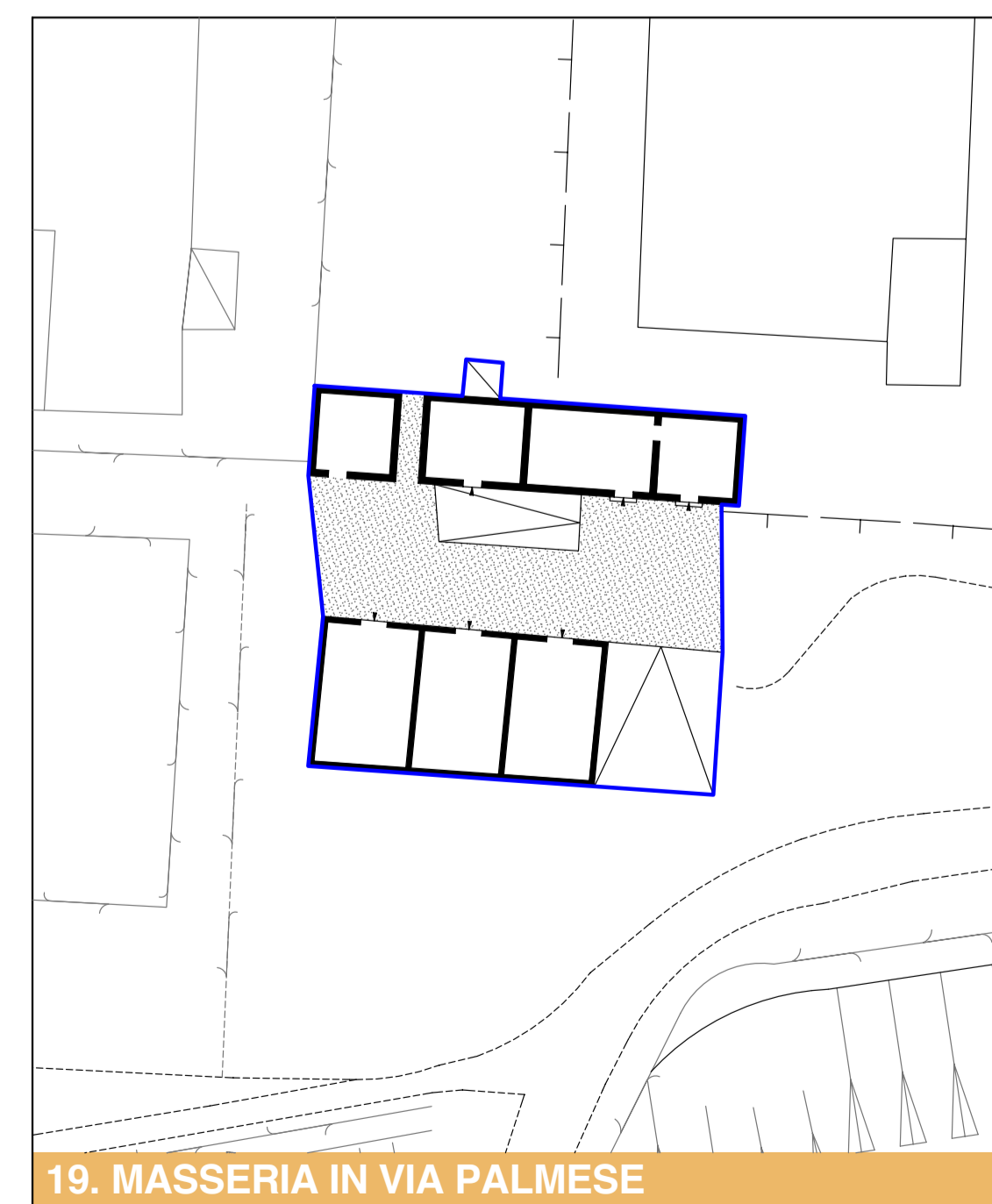
INQUADRAMENTO URBANO - SCALA 1:5000



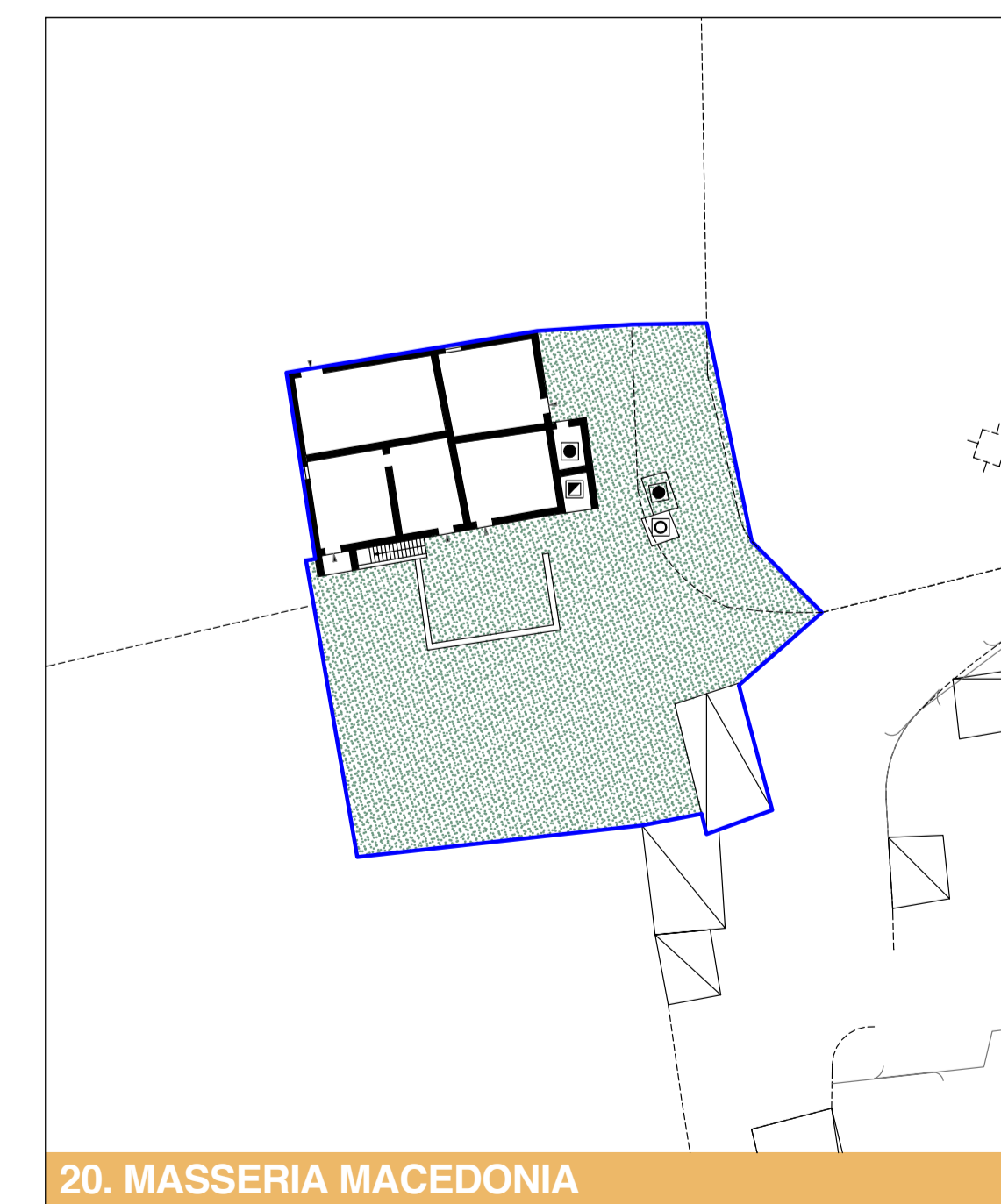
17. MASSERIA GUADAGNI



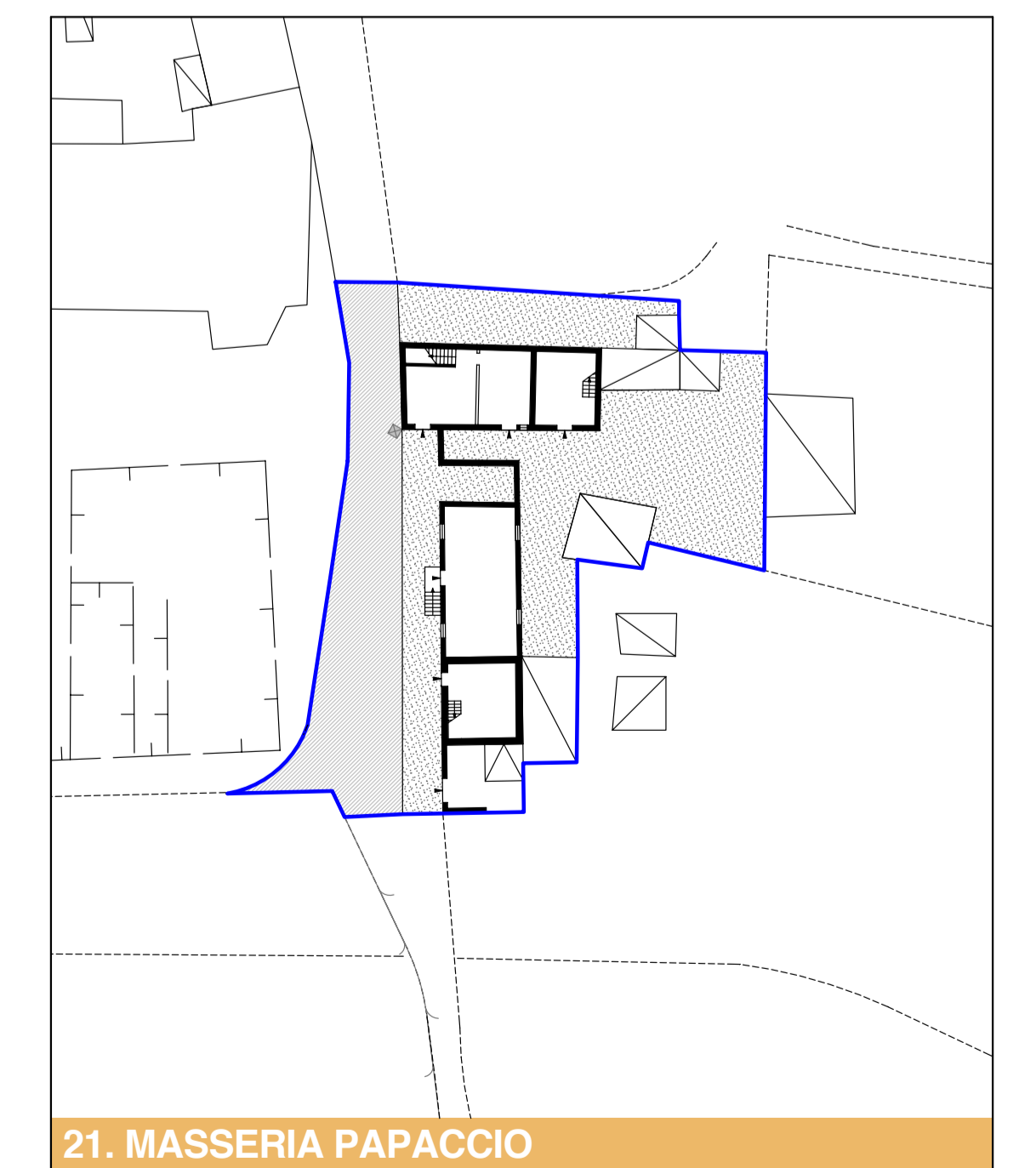
18. MASSERIA MANNA



19. MASSERIA IN VIA PALMESE



20. MASSERIA MACEDONIA



21. MASSERIA PAPACCIO

COMUNE DI POMIGLIANO D'ARCO
 Provincia di Napoli
 SETTORE UFFICIO TECNICO - UFFICIO DI PIANO

**PIANO URBANISTICO ATTUATIVO
 PER IL CENTRO STORICO**

TAVOLA
A.11.11
**RILIEVO PIANI TERRA
 MASSERIE**

DATA: giugno 2006 SCALA 1:500

PROGETTO
 arch. A. Lucia Casavieri
 arch. Stefano Sasso

CONSULENZA
 prof. arch. Pier Luigi Cervellati

COLLABORAZIONE
 arch. Massimo Gallo

RESPONSABILE DEL PROCEDIMENTO
 geom. Sandro Rinaldi

ASSESSORE ALLE POLITICHE DI PIANIFICAZIONE URBANA SINDACO
 arch. Francesca De Falco dott. Antonio Della Ratta

Adottato con Delibera G. C. N° del
 Depositato in visione dal al
 Approvato con Delibera G. C. N° del