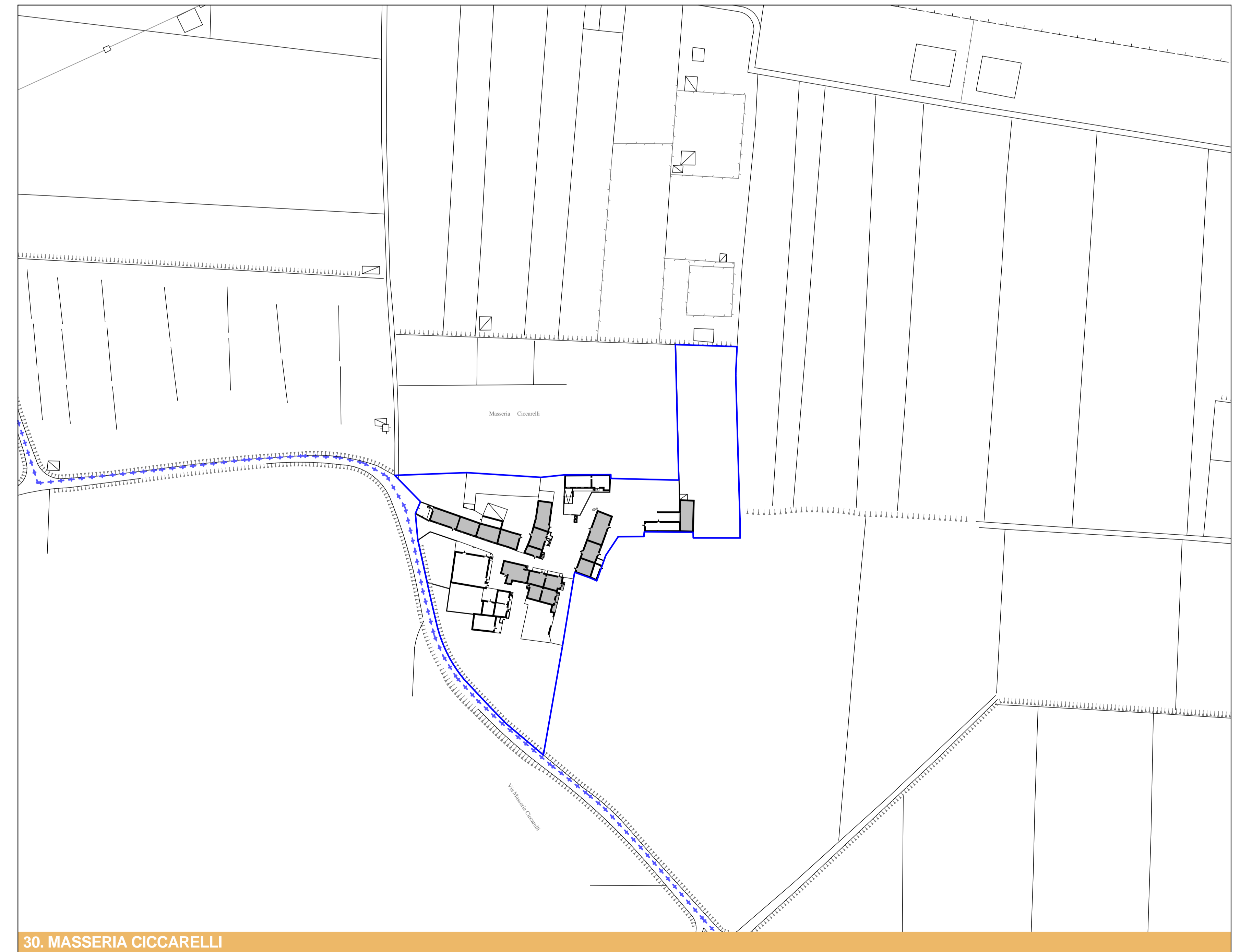
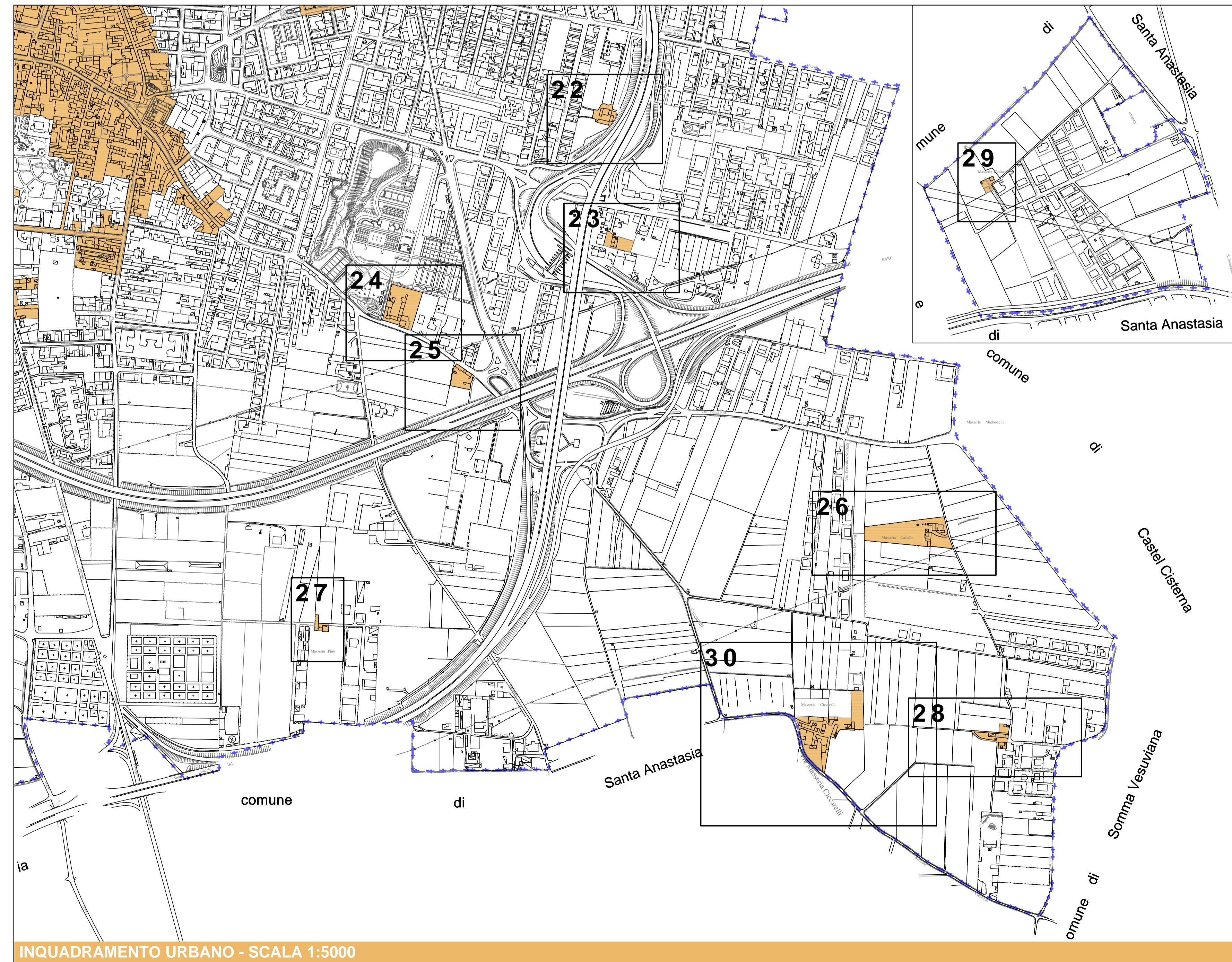
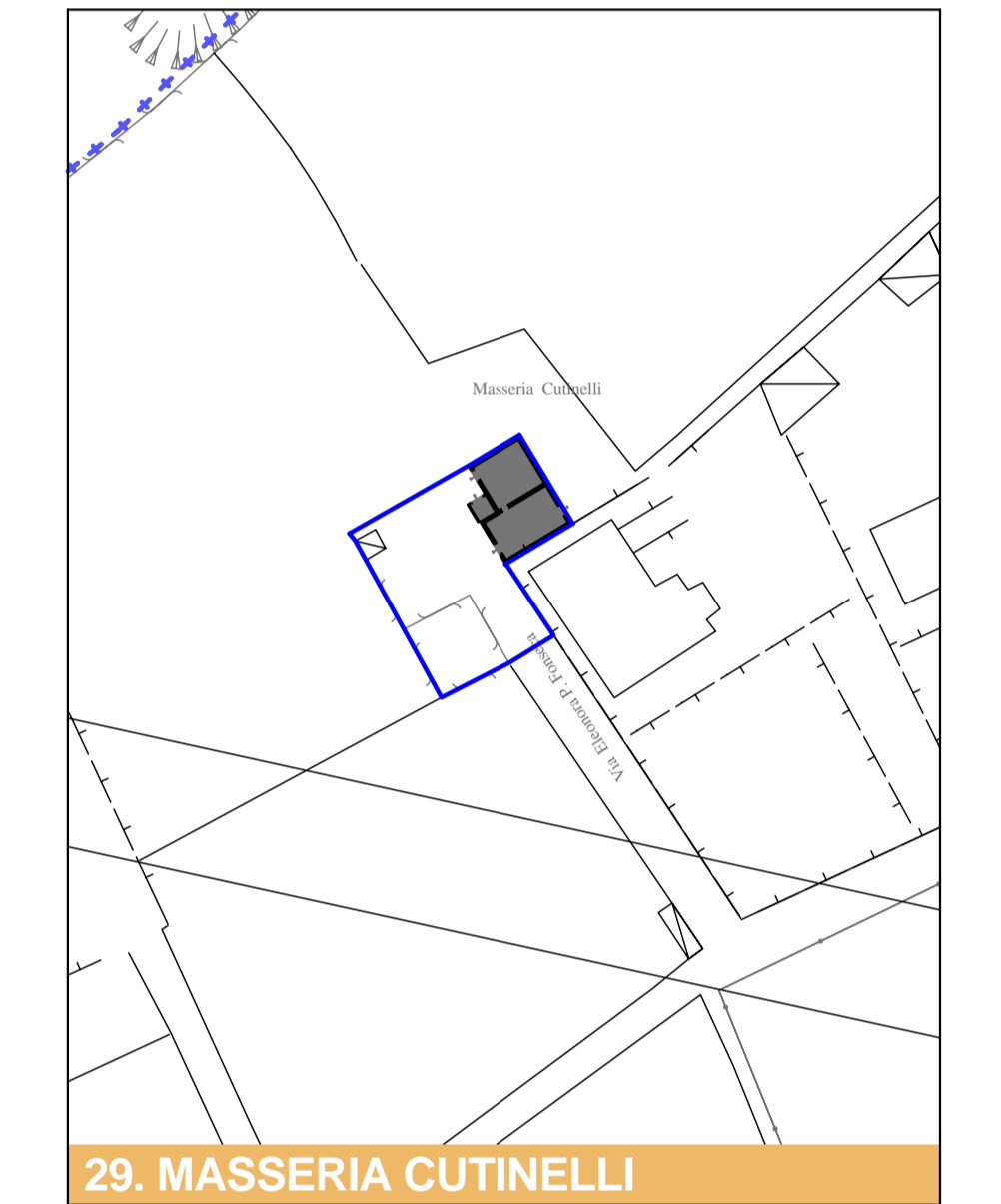
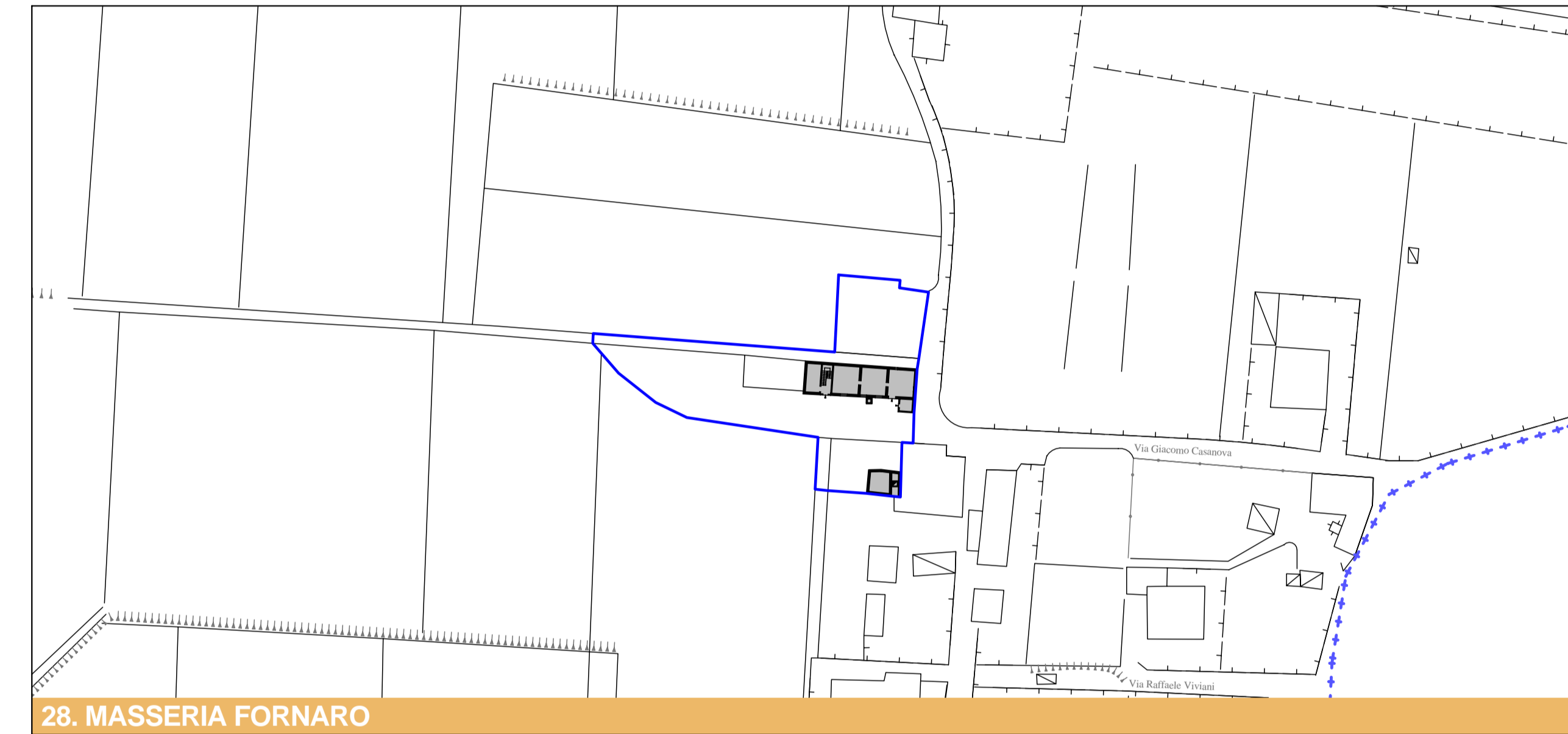
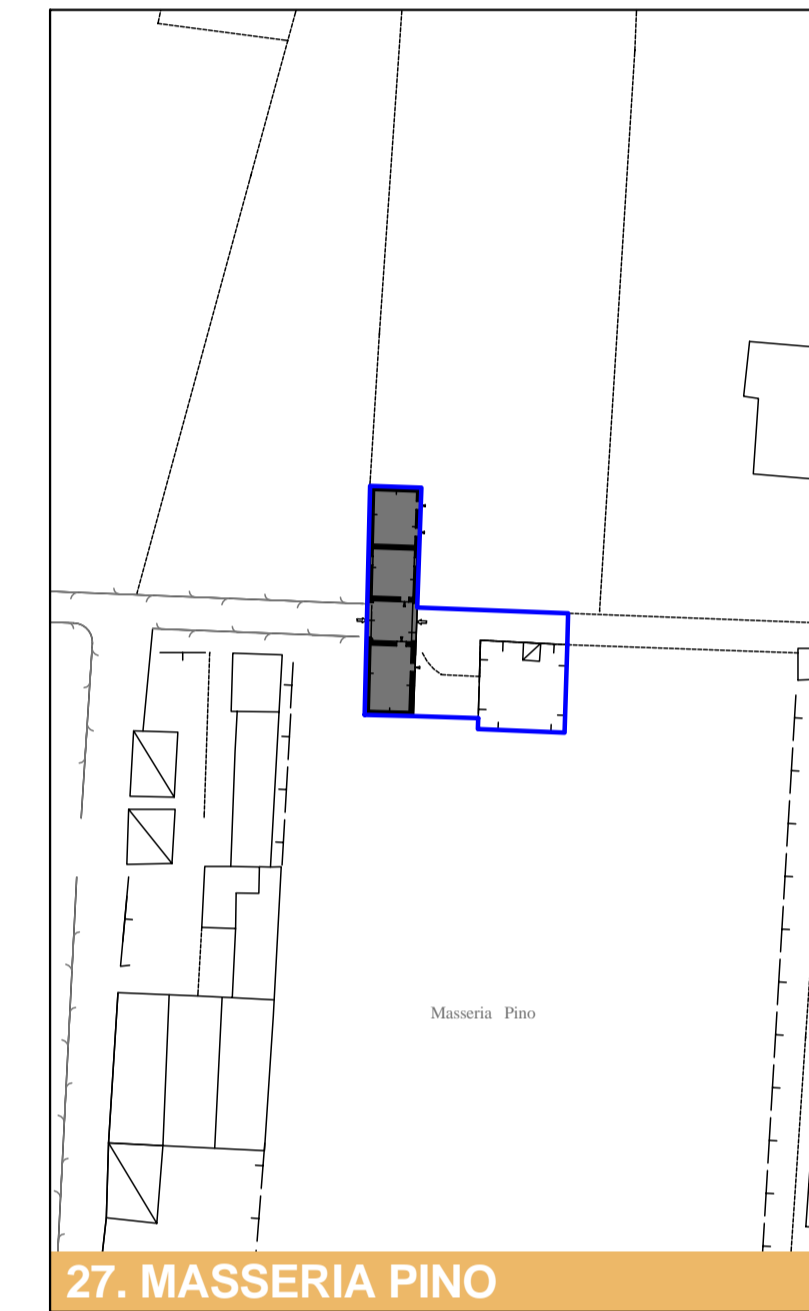
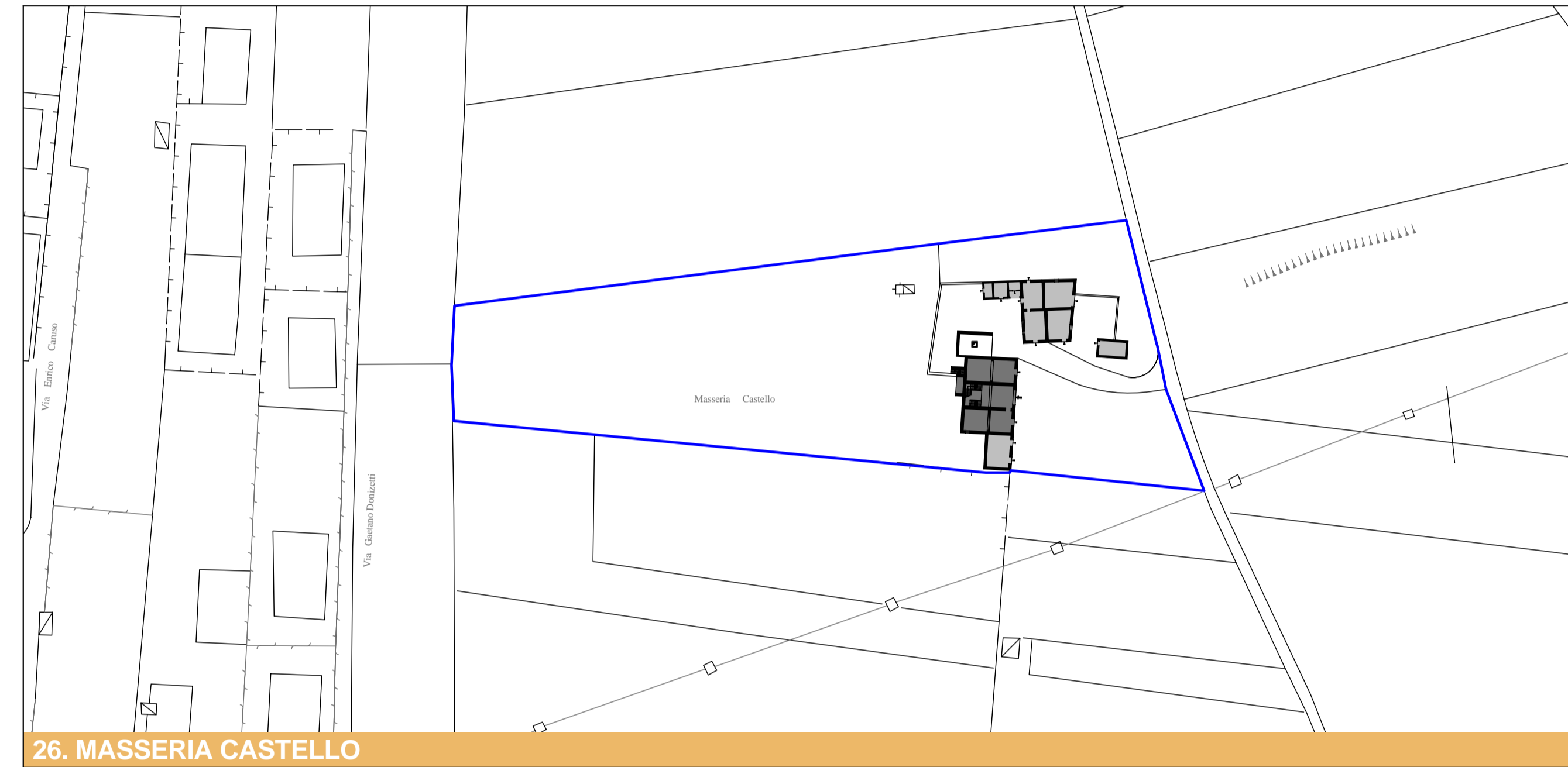
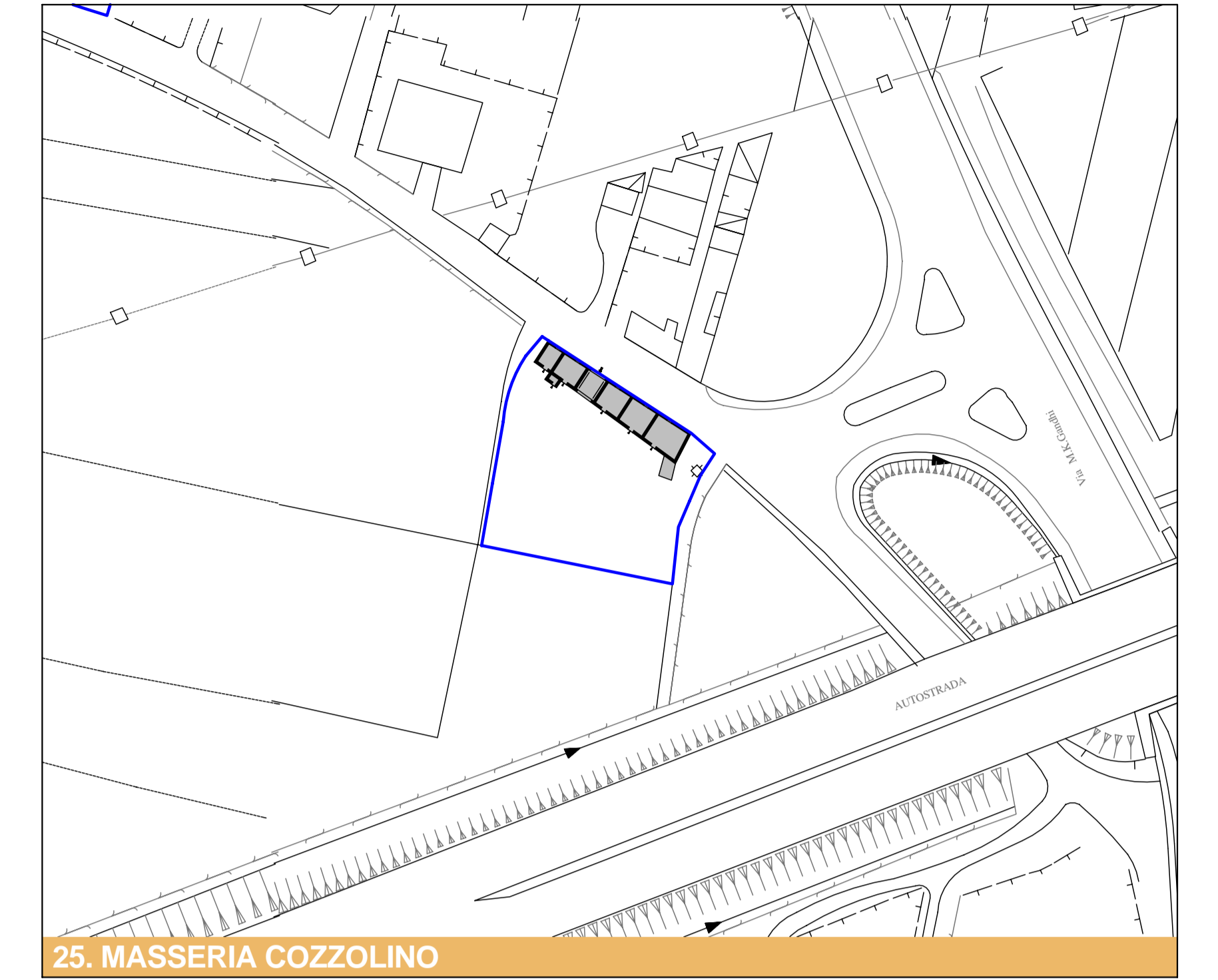
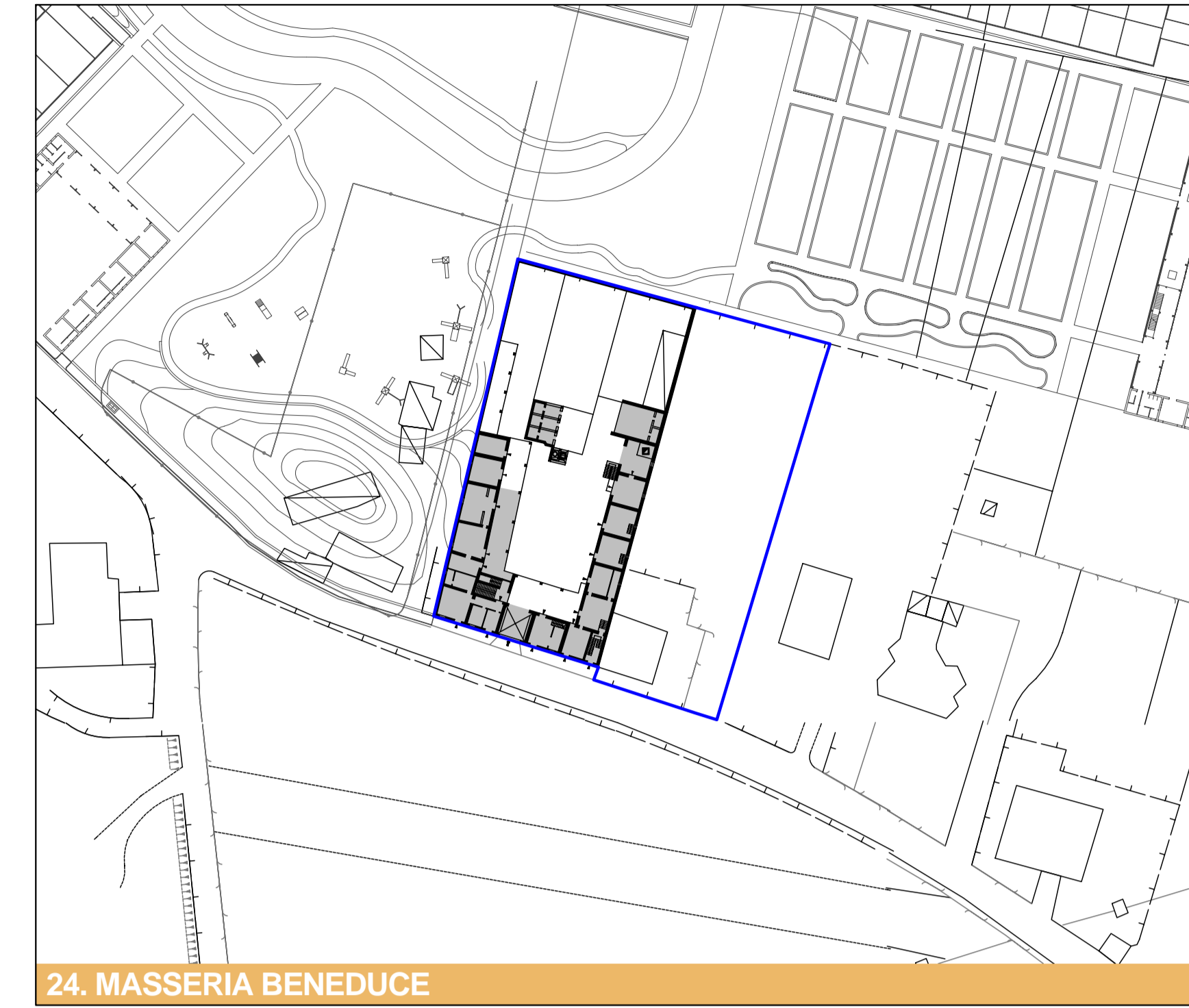
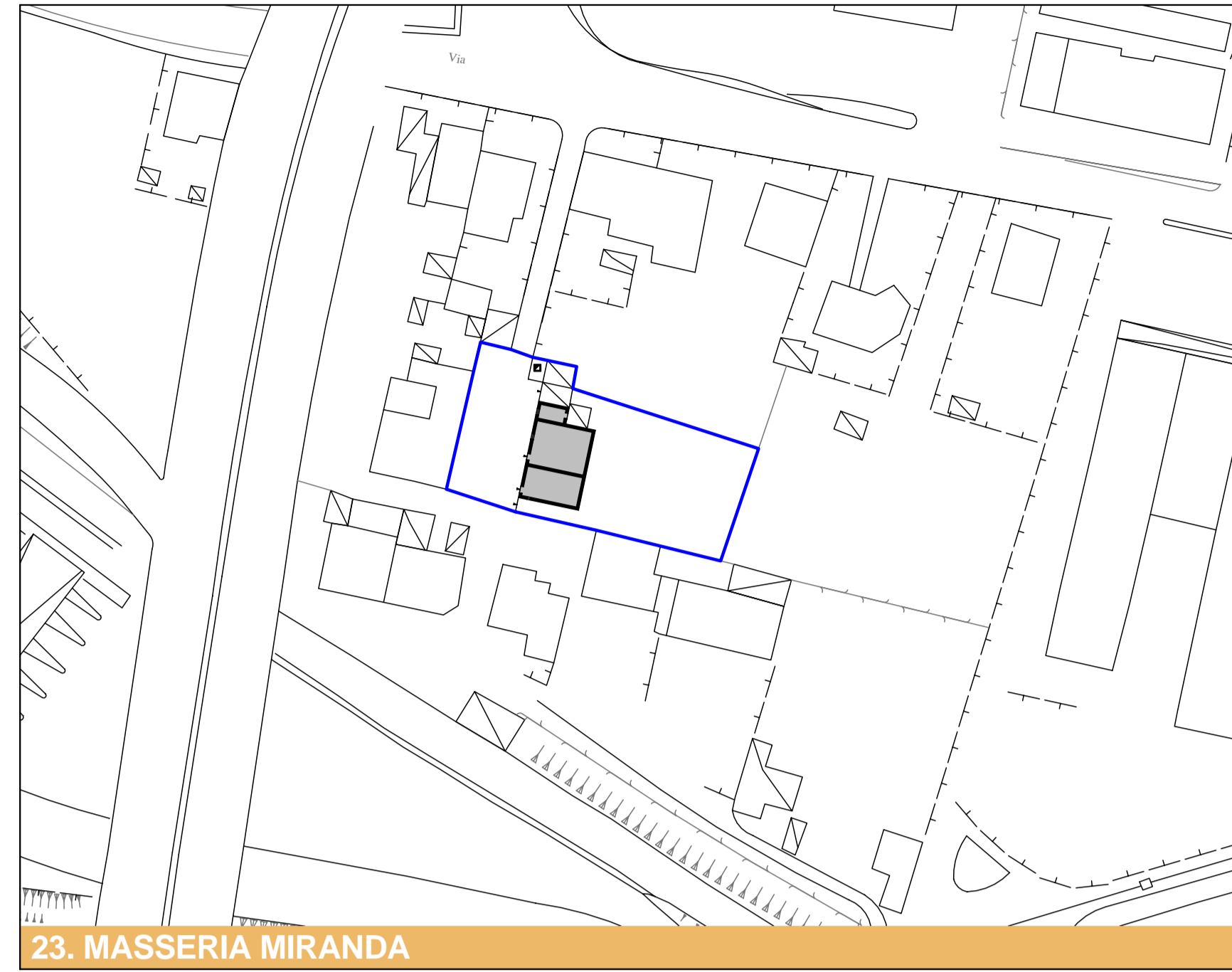
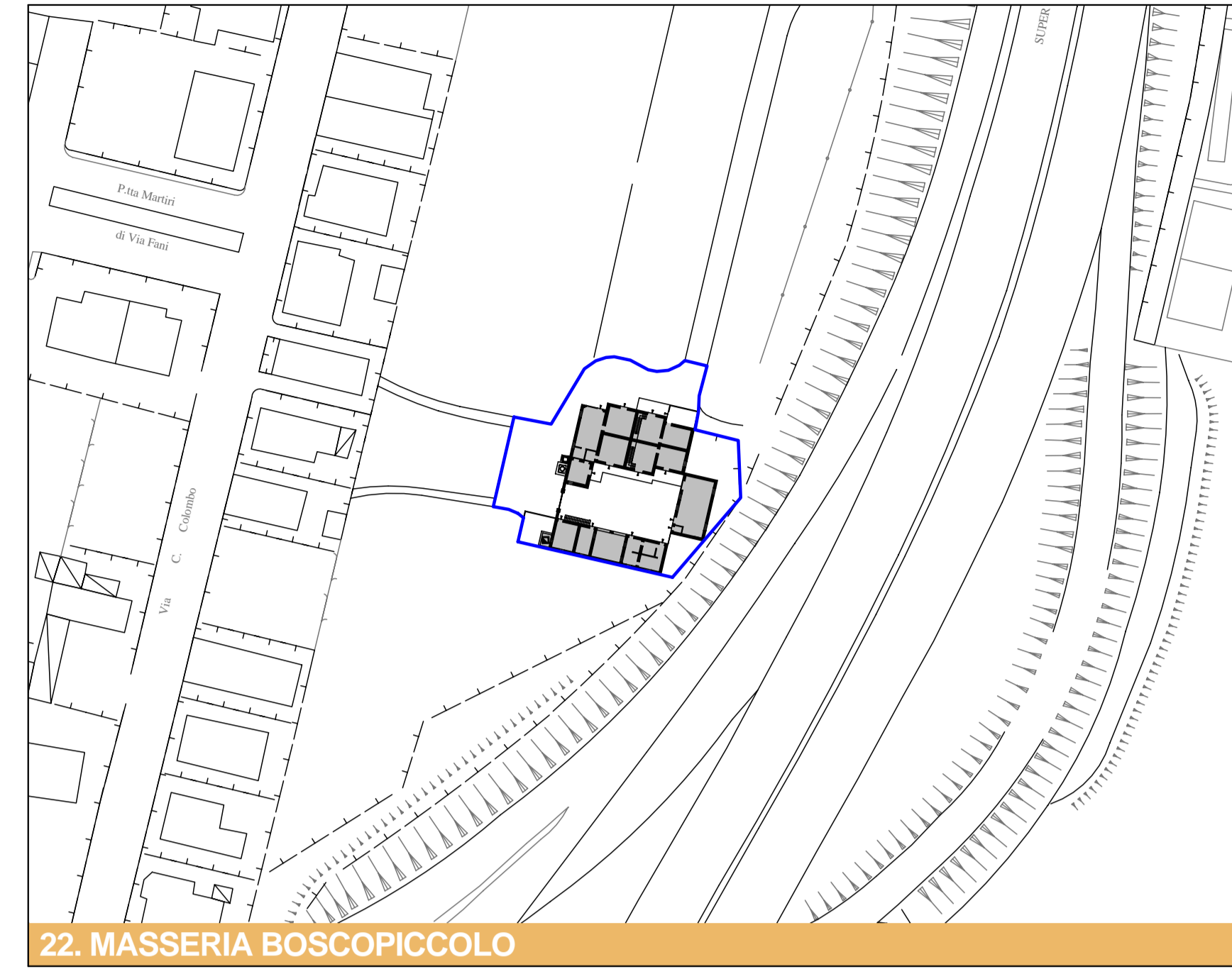


**LEGENDA**

- Perimetro P.U.A.
- Catasto storico definito "Borbonico" (1876)
- Catasto storico di "Primo Impianto" (1913-1937)
- Catasto storico (1955)



**COMUNE DI POMIGLIANO D'ARCO**  
 Provincia di Napoli  
 SETTORE UFFICIO TECNICO - UFFICIO DI PIANO

**PIANO URBANISTICO ATTUATIVO  
 PER IL CENTRO STORICO**

**TAVOLA  
 A.7.5  
 NETTO STORICO  
 MASSERIE**

DATA: giugno 2006      SCALA 1:1000

**PROGETTO**  
 arch. A. Lucia Casavivieri  
 arch. Stefano Sasso

**CONSULENZA**  
 prof. arch. Pier Luigi Cervellati

**COLLABORAZIONE**  
 arch. Massimo Gallo

**RESPONSABILE DEL PROCEDIMENTO**  
 geom. Sandro Rinaldi

**ASSESSORE ALLE POLITICHE DI PIANIFICAZIONE URBANA**  
 arch. Francesca De Falco

**SINDACO**  
 dott. Antonio Della Ratta

Adottato con Delibera G. C. N° ..... del .....  
 Depositato in visione dal ..... al .....  
 Approvato con Delibera G. C. N° ..... del .....